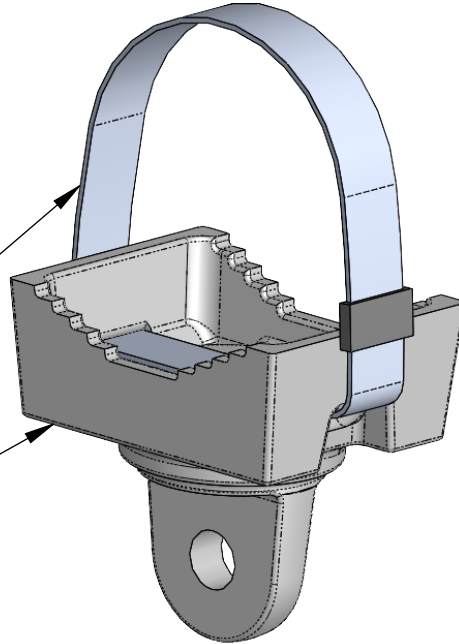


BAND & BUCKLE
 304 SS (BANDS)
 316 SS (BUCKLES)

CAST CABLE
 CLAMP SADDLE



PART NUMBER	BAND LENGTH	MAST ARM DIA.
0919-28	29"	3" - 7"
0919-29	42"	7" - 11"
0919-30	59"	12" - 15"
0919-31	70"	18" - 21"

NOTES:
 1. AVAILABLE WITH CABLE STYLE CLAMP

THE INFORMATION CONTAINED IN THIS DRAWING IS THE SOLE PROPERTY OF SKYBRACKET. ANY REPRODUCTION IN PART OR WHOLE WITHOUT THE WRITTEN PERMISSION OF SKYBRACKET IS PROHIBITED.



TITLE
SADDLE, PERP MINI-MOUNT BAND

APPROVALS	BY	DATE
DRAWN	TRC	2/9/2024
SALES		
ENGINEERING		
DO NOT SCALE DRAWING		

SIZE A	DWG. NO. 0919-YY-BAND	REV. A
SCALE: NTS CAD FILE: 0919-YY-BAND		SHEET 1 OF 1