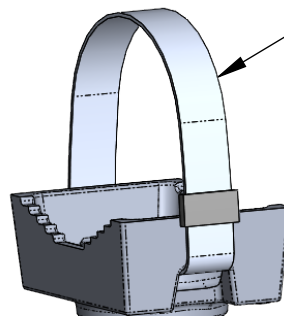


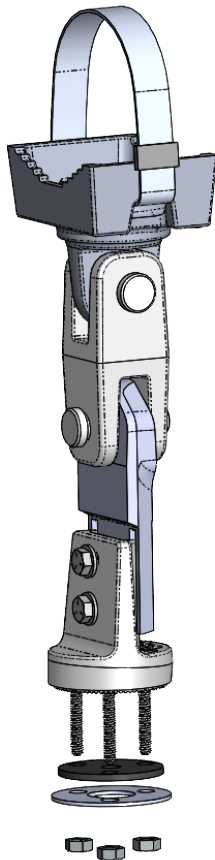
BAND AND BUCKLE
304 SS (BAND)
316 SS (BUCKLE)



CAST BAND
CLAMP SADDLE

CAST CLEVIS

(2) 5/8 X 2 STAINLESS CLEVIS PIN
(2) 1/8 STAINLESS COTTER PIN



HANGER BAR

(4) 5-16 X 1-1/2 HEX BOLT
(8) 5/16 FLAT WASHER
(4) 5/16 SPLIT LOCK WASHER
(4) 5/16 HEX NUT

TRI-STUD ADAPTER

(1) RUBBER SEAL
(1) LOWER RETAINING RING
(3) 5/16 HEX NUT

BAND LENGTH	MAST ARM DIA.
29"	3" - 7"
42"	7" - 11"
59"	12" - 15"
70"	18" - 21"

PART NUMBER
SB29-FFS-TSA

BAND LENGTH

- NOTES:
1. YELLOW ZINC DICHROMATE PLATED FASTENERS
2. AVAILABLE WITH CABLE STYLE CLAMP

THE INFORMATION CONTAINED IN THIS DRAWING IS THE SOLE PROPERTY OF SKYBRACKET. ANY REPRODUCTION IN PART OR WHOLE WITHOUT THE WRITTEN PERMISSION OF SKYBRACKET IS PROHIBITED.



APPROVALS	BY	DATE
DRAWN	TRC	5/22/2023
SALES		
ENGINEERING		

TITLE FLAT FREE SWINGING SIGN MOUNT - TSA - BAND		
SIZE A	DWG. NO. SB29-FFS-TSA	REV. A