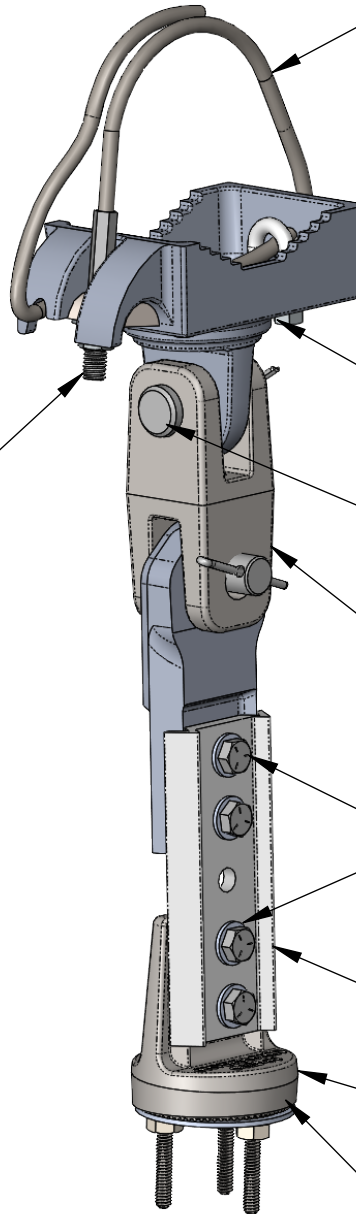
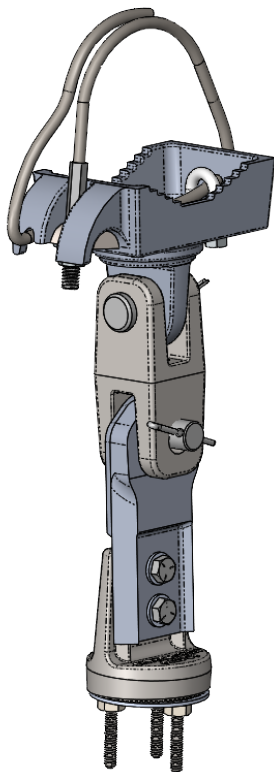


- (1) 3/8-16 THREAD ENDS
- (1) 3/8 FLAT WASHER
- (1) 3/8 SPLIT LOCK WASHER
- (1) 3/8 HEX NUT
- (1) CABLE STOPS



GALVANIZED CABLE WITH SS STUD

CAST CABLE CLAMP SADDLE

- (1) 5/16-18 U-BOLT
- (1) 5/16 SPLIT LOCK WASHER
- (1) 5/16 HEX NUT

- (2) 5/8 X 2 CLEVIS PIN
- (2) 1/8 STAINLESS COTTER PIN

CAST CLEVIS

- (4) 5-16 X 1-1/2 HEX BOLT
- (8) 5/16 FLAT WASHER
- (4) 5/16 SPLIT LOCK WASHER
- (4) 5/16 HEX NUT

EXTENDER

TRI-STUD ADAPTER

- (1) RUBBER SEAL
- (1) LOWER RETAINING RING
- (3) 5/16 SPLIT LOCK WASHER
- (3) 5/16 HEX NUT

PART NUMBER

SBC45-PFS-TSA

CABLE LENGTH

CABLE LENGTH	MAX MAST ARM DIA.
45"	11"
62"	16"
84"	22"

NOTES:

1. STAINLESS STEEL FASTENERS
2. AVAILABLE WITH BAND STYLE CLAMP

THE INFORMATION CONTAINED IN THIS DRAWING IS THE SOLE PROPERTY OF SKYBRACKET. ANY REPRODUCTION IN PART OR WHOLE WITHOUT THE WRITTEN PERMISSION OF SKYBRACKET IS PROHIBITED.



TITLE
FREE SWINGING SIGN MOUNT -TSA - CABLE

APPROVALS	BY	DATE
DRAWN	TRC	3/30/2023
SALES		
ENGINEERING		

SIZE	DWG. NO.	REV.
A	SBC45-PFS-TSA	A

DO NOT SCALE DRAWING

SCALE: NTS CAD FILE: SBC45-PFS-TSA

SHEET 1 OF 1