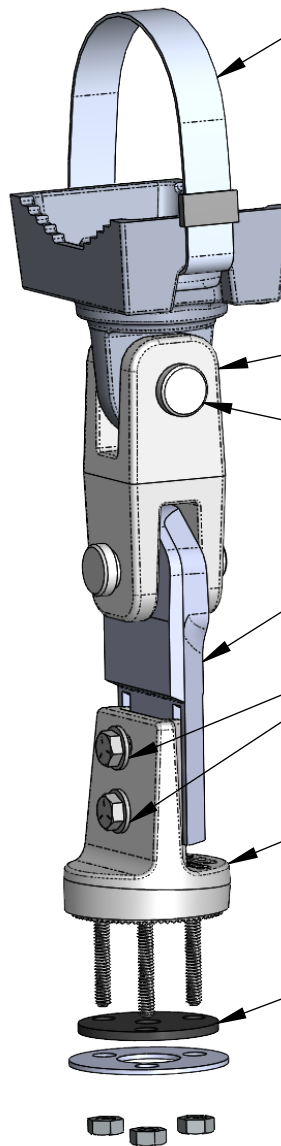
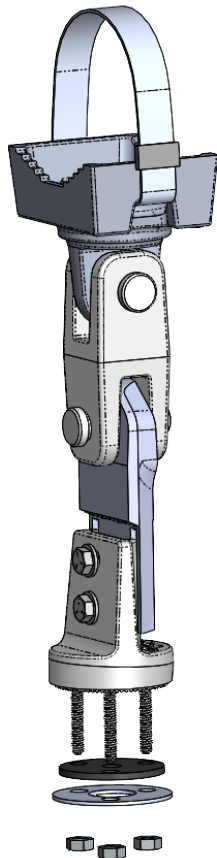


BAND AND BUCKLE
304 SS (BAND)
316 SS (BUCKLE)



CAST BAND
CLAMP SADDLE

CAST CLEVIS

(2) 5/8 X 2 STAINLESS CLEVIS PIN
(2) 1/8 STAINLESS COTTER PIN

HANGER BAR

(4) 5-16 X 1-1/2 HEX BOLT
(8) 5/16 FLAT WASHER
(4) 5/16 SPLIT LOCK WASHER
(4) 5/16 HEX NUT

TRI-STUD ADAPTER

(1) RUBBER SEAL
(1) LOWER RETAINING RING
(3) 5/16 SPLIT LOCK WASHER
(3) 5/16 HEX NUT

PART NUMBER

SS-SB29-FFS-TSA

CABLE LENGTH

BAND LENGTH	MAST ARM DIA.
29"	3" - 7"
42"	7" - 11"
59"	12" - 15"
70"	18" - 21"

- NOTES:
1. STAINLESS STEEL FASTENERS
2. AVAILABLE WITH CABLE STYLE CLAMP

THE INFORMATION CONTAINED IN THIS DRAWING IS THE SOLE PROPERTY OF SKYBRACKET. ANY REPRODUCTION IN PART OR WHOLE WITHOUT THE WRITTEN PERMISSION OF SKYBRACKET IS PROHIBITED.



TITLE
**FLAT FREE
SWINGING SIGN
MOUNT -TSA -
BAND**

APPROVALS	BY	DATE
DRAWN	TRC	5/22/2023
SALES		
ENGINEERING		

SIZE A	DWG. NO. SS-SB29-FFS-TSA	REV. A
DO NOT SCALE DRAWING		SCALE: NTS CAD FILE: SS-SB29-FFS-TSA SHEET 1 OF 1