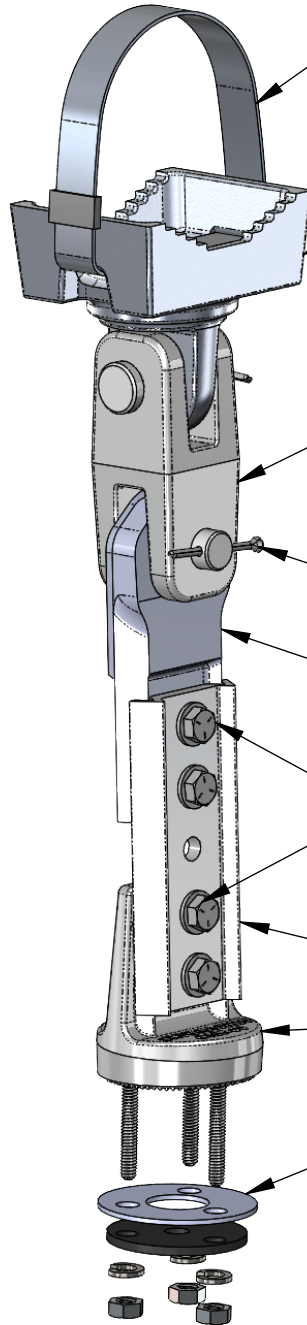
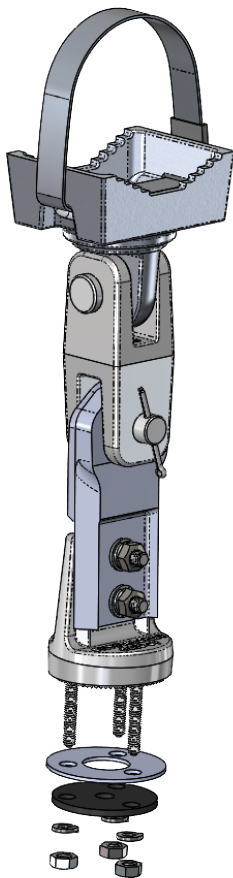


BAND AND BUCKLE  
304 SS (BAND)  
316 SS (BUCKLE)



CAST CABLE  
CLAMP SADDLE

CAST CLEVIS

(2) 5/8 X 2 CLEVIS PIN  
(2) 1/8 STAINLESS COTTER PIN

HANGER BAR

(4) 5-16 X 1-1/2 HEX BOLT  
(8) 5/16 FLAT WASHER  
(4) 5/16 SPLIT LOCK WASHER  
(4) 5/16 HEX NUT

EXTENDER

TRI-STUD ADAPTER

(1) RUBBER SEAL  
(1) LOWER RETAINING RING  
(3) 5/16 SPLIT LOCK WASHER  
(3) 5/16 HEX NUT

**PART NUMBER**

**SS-SB29-PFS-TSA**

BAND LENGTH

| BAND LENGTH | MAST ARM DIA. |
|-------------|---------------|
| 29"         | 3" - 7"       |
| 42"         | 7" - 11"      |
| 59"         | 12" - 15"     |
| 70"         | 18" - 21"     |

**NOTES:**

1. STAINLESS STEEL FASTENERS
2. AVAILABLE WITH CABLE STYLE CLAMP

THE INFORMATION CONTAINED IN THIS DRAWING IS THE SOLE PROPERTY OF SKYBRACKET. ANY REPRODUCTION IN PART OR WHOLE WITHOUT THE WRITTEN PERMISSION OF SKYBRACKET IS PROHIBITED.



TITLE  
**FREE SWINGING  
SIGN MOUNT -TSA -  
BAND**

| APPROVALS   | BY  | DATE      |
|-------------|-----|-----------|
| DRAWN       | TRC | 3/31/2023 |
| SALES       |     |           |
| ENGINEERING |     |           |

| SIZE | DWG. NO.        | REV. |
|------|-----------------|------|
| A    | SS-SB29-PFS-TSA | A    |

DO NOT SCALE DRAWING

SCALE: NTS CAD FILE: SS-SB29-PFS-TSA

SHEET 1 OF 1