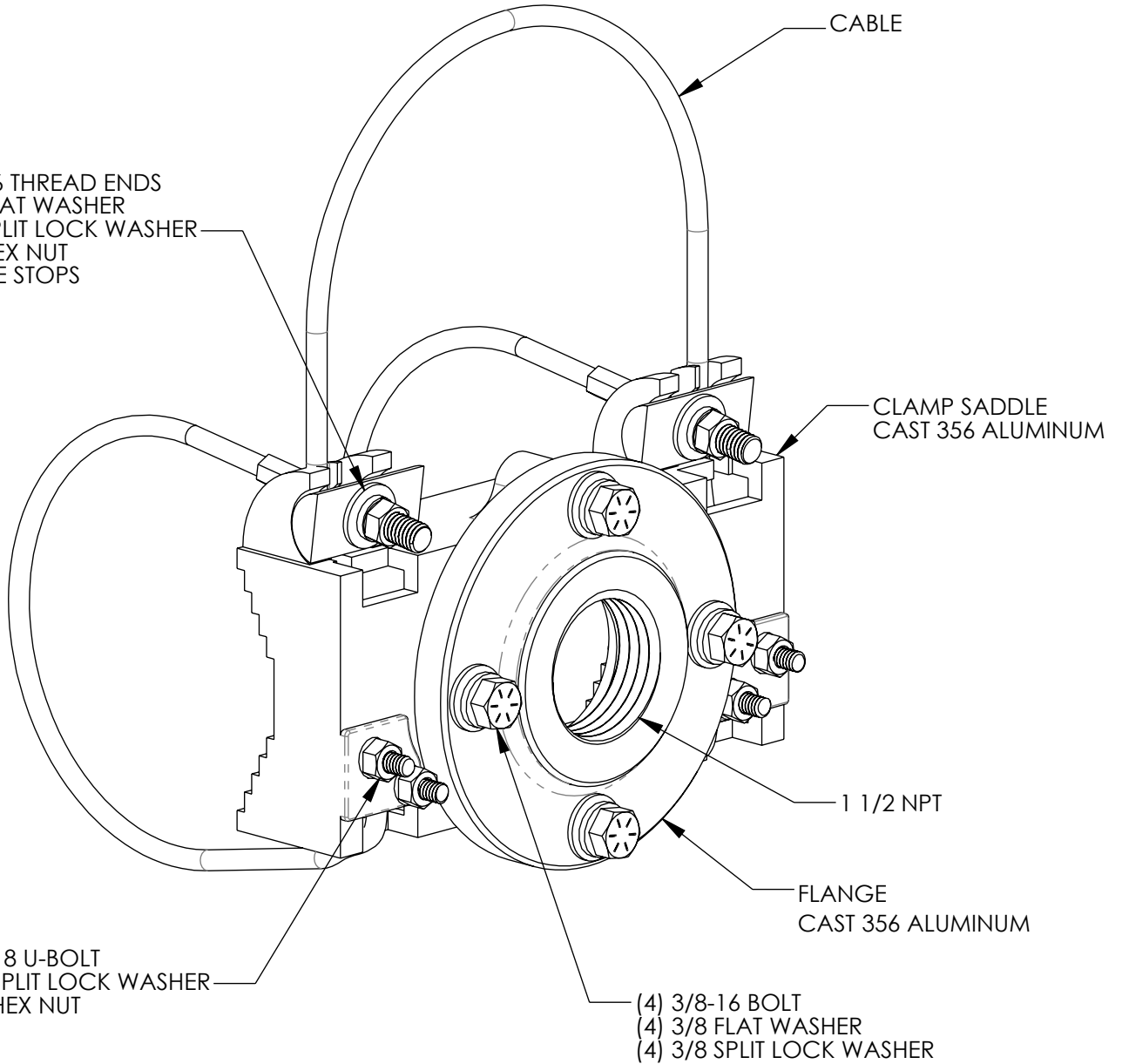


- (2) 3/8-16 THREAD ENDS
- (2) 3/8 FLAT WASHER
- (2) 3/8 SPLIT LOCK WASHER
- (2) 3/8 HEX NUT
- (2) CABLE STOPS

- (2) 5/16-18 U-BOLT
- (2) 5/16 SPLIT LOCK WASHER
- (2) 5/16 HEX NUT

- (4) 3/8-16 BOLT
- (4) 3/8 FLAT WASHER
- (4) 3/8 SPLIT LOCK WASHER



**PART NUMBER**  
**SS-SBC66-ETI**

CABLE LENGTH \_\_\_\_\_

CABLE LENGTH	MAST ARM DIA.
66"	3" - 7"
90"	7" - 11"
120"	12" - 15"
144"	16" - 20"
165"	20" - 22"

- NOTES:
1. STAINLESS STEEL FASTENERS
  2. AVAILABLE WITH BAND STYLE CLAMP

THE INFORMATION CONTAINED IN THIS DRAWING IS THE SOLE PROPERTY OF SKYBRACKET. ANY REPRODUCTION IN PART OR WHOLE WITHOUT THE WRITTEN PERMISSION OF SKYBRACKET IS PROHIBITED.



APPROVALS	BY	DATE
DRAWN	TRC	1/23/19
SALES		
ENGINEERING		

TITLE  
**1 1/2" FLANGE  
CABLE STYLE  
MOUNT**