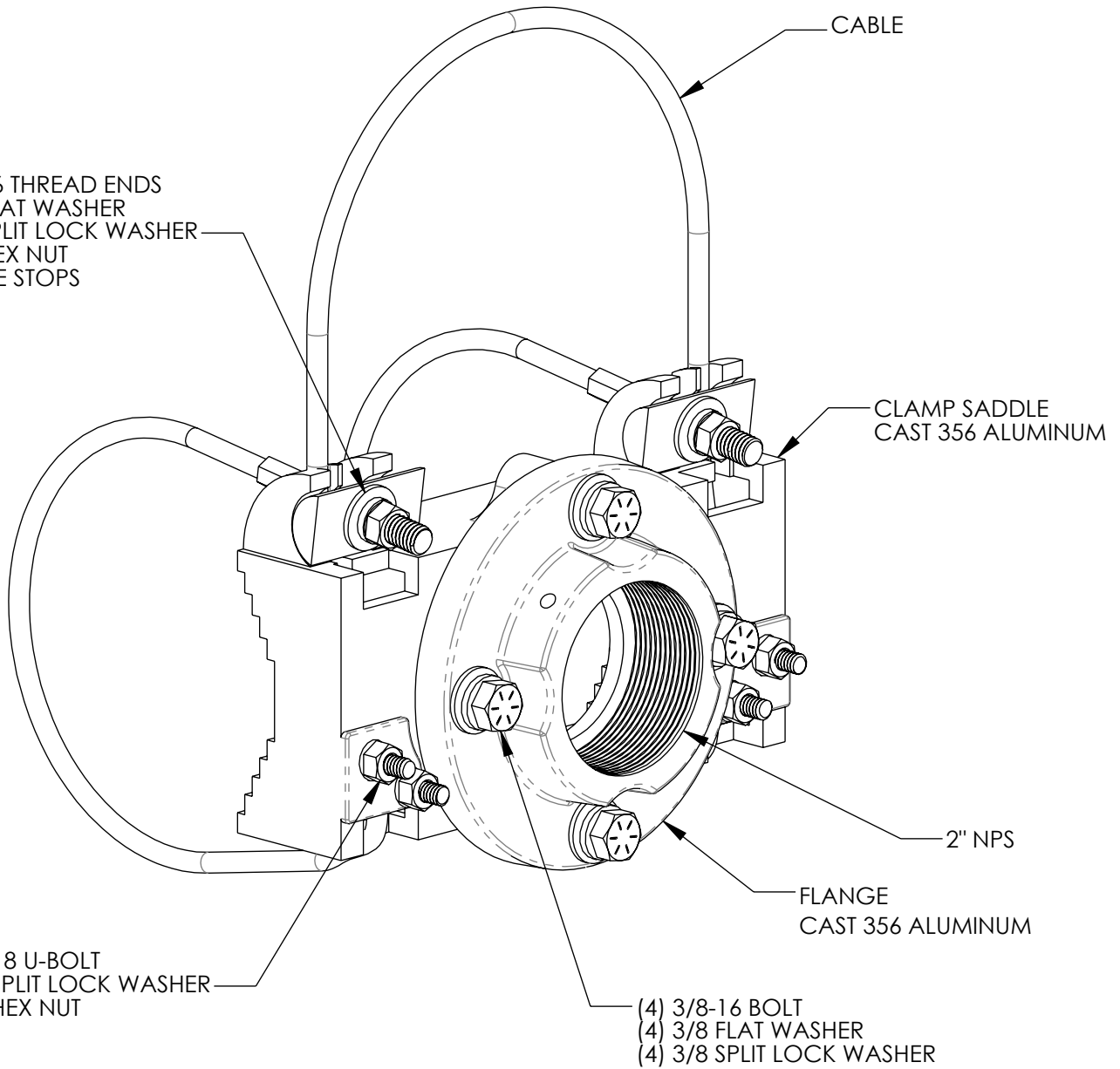


- (2) 3/8-16 THREAD ENDS
- (2) 3/8 FLAT WASHER
- (2) 3/8 SPLIT LOCK WASHER
- (2) 3/8 HEX NUT
- (2) CABLE STOPS

- (2) 5/16-18 U-BOLT
- (2) 5/16 SPLIT LOCK WASHER
- (2) 5/16 HEX NUT

- (4) 3/8-16 BOLT
- (4) 3/8 FLAT WASHER
- (4) 3/8 SPLIT LOCK WASHER



CABLE LENGTH	MAST ARM DIA.
66"	3" - 7"
90"	7" - 11"
120"	12" - 15"
144"	16" - 20"
165"	20" - 22"

**PART NUMBER**  
**SS-SBC66-FLANGE**

CABLE LENGTH └─┬─┘

- NOTES:
1. STAINLESS STEEL FASTENERS
  2. AVAILABLE WITH BAND STYLE CLAMP

THE INFORMATION CONTAINED IN THIS DRAWING IS THE SOLE PROPERTY OF SKYBRACKET. ANY REPRODUCTION IN PART OR WHOLE WITHOUT THE WRITTEN PERMISSION OF SKYBRACKET IS PROHIBITED.



APPROVALS	BY	DATE
DRAWN	TRC	3/9/2020
SALES		
ENGINEERING		

TITLE		2" FLANGE BAND STYLE MOUNT	
SIZE	DWG. NO.	REV.	
A	SS-SBC66-FLANGE	A	
DO NOT SCALE DRAWING		SCALE: NTS	CAD FILE: SS-SBC66-FLANGE